

**Z5048**  
**Flying pin, 10 mm**  
**Mounting instructions (2.1EN)**

### **General Information**

Z5048 Flying pin, 10 mm  
Mounting instructions

Version 2.1EN, 11/2012, D2940.E.02

Copyright © 2012; by d&b audiotechnik GmbH; all rights reserved.

**Keep this manual with the product or in a safe place so that it is available for future reference.**

When reselling this product, hand over this manual to the new customer.

If you supply d&b products, please draw the attention of your customers to this manual. Enclose the relevant manuals with the systems. If you require additional manuals for this purpose, you can order them from d&b.

d&b audiotechnik GmbH  
Eugen-Adolf-Strasse 134, D-71522 Backnang, Germany  
Telephone +49-7191-9669-0, Fax +49-7191-95 00 00  
E-mail: docadmin@dbaudio.com, Internet: www.dbaudio.com

# Z5048 Flying pin, 10 mm

## Table of content

1. Product description.....	3
2. Safety instructions.....	3
3. Load safety information.....	4
4. Assembly.....	4
5. Application.....	4
5.1. M2 Stagemonitor.....	4
5.2. Q-Series loudspeaker.....	4

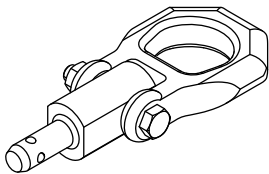


Fig. 1: Z5048 Flying pin, 10 mm

## 1. Product description

The Z5048 Flying pin, 10 mm enables single M2 or Q-TOP (Q7/Q10) cabinets to be flown either horizontally or vertically.

The cabinets are equipped with two precision mounting sockets, each accepting a single Flying pin, 10 mm.

Minimum two or up to four Z5048 Flying pins will be required depending on the method of deployment.

## 2. Safety instructions

Installation should only be carried out by fully trained personnel. There are certain rules for installation that must be complied with.

It is the responsibility of the person installing the assembly to ensure that the structure being attached to is suitable for the intended use.

The Z5048 Flying pin, 10 mm must only be used in conjunction with the d&b loudspeaker cabinets which are equipped with a socket to accept the Flying pin, 10 mm.

The Z5048 Flying pins and the sockets in the cabinets must be inspected before use for faults (release mechanism function, deformation or corrosion, missing ball bearings, or damage to the mounting sockets or cabinet). A cabinet with damaged mounting sockets must not be flown under any circumstances, whilst damaged Flying pins must be withdrawn from use immediately.

The Z5048 Flying pins are not designed to be rotated in a mounting socket under load conditions. As a loudspeaker cabinet will rotate if picked up from one point, a minimum of two flying pins should always be used to fly a single cabinet.

Ensure all locking pin is inserted and locked securely before lifting the cabinet.

The locking pins should only be unlocked for disassembly on the ground.

Secondary safeties must always be provided and used when flying or fixing loudspeaker loads overhead.



### WARNING!



**LOCK PIN  
SECURELY  
BEFORE LIFTING**  
**ONLY UNLOCK FOR  
DISASSEMBLY ON  
GROUND**

**CAUTION**



## WARNING!

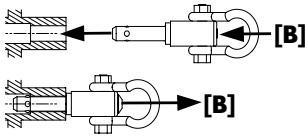


Fig. 2: Z5048 Assembly



## WARNING!

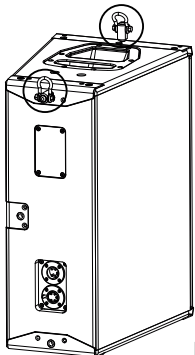
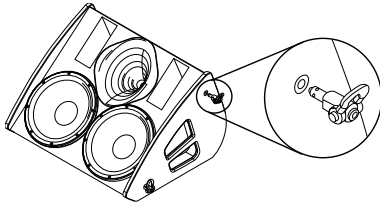


Fig. 3:

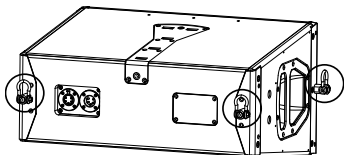


Fig. 4:

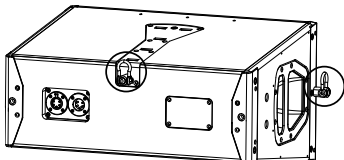


Fig. 5:

### 3. Load safety information

The maximum permitted working load limit (WLL) of the Z5048 Flying pin, 10 mm is 105 kg/231.5 lb

### 4. Assembly

Pressing the button [B] releases the locking mechanism allowing insertion and retraction to and from the socket of the cabinet.

Releasing the button [B] after the pin is fixed in place the locking mechanism will be locked.

### 5. Application

#### 5.1. M2 Stagemonitor

**On no account should an additional M2 cabinet be suspended from the M2 Flying pins of another.**

The Z5048 Flying pin allows an M2 stage monitor to be flown quickly and easily, either vertically (e.g. as sidefill), or horizontally (e.g. under a stage fitted with grill apertures).

The M2 cabinet is equipped with two precision mounting sockets on each side, each accepting a single M2 Flying pin.

#### 5.2. Q-Series loudspeaker

The Z5048 Flying pin allows either the vertical or horizontal suspension of a single Q-TOP cabinet.

In the case of a single cabinet to be suspended vertically one flying pin each can be attached to the centre sockets at the up side of the front grill and the back of the cabinet (see Fig. 3).

In the case of a single cabinet to be suspended horizontally two flying pins each to the left and right panel of the cabinet can be inserted to the centre sockets at the front grill and the back of the cabinet (see Fig. 4).

Alternatively two flying pins can be inserted to the centre socket at the front grill and a third flying pin to the additional socket in the centre of the rear panel (see Fig. 5).