

**R60 and D6 USB driver
installation Windows 7
Installation guide (1.0 EN)**

General Information

R60 and D6 USB driver installation
Windows 7

Installation guide

Version 1.0 EN, 02/2010, DOC01634

Copyright © 2010 by d&b audiotechnik GmbH; all rights reserved.

d&b audiotechnik GmbH
Eugen-Adolff-Strasse 134, D-71522 Backnang, Germany
Telephone +49-7191-9669-0, Fax +49-7191-95 00 00
E-mail: docadmin@dbaudio.com, Internet: www.dbaudio.com

Contents

1. R60 and D6 USB driver installation Windows 7.....	4
1.1. Windows 7 driver installation.....	4
2. Uninstalling the drivers.....	10
3. Troubleshooting.....	11
3.1. Devices not shown in Device Manager for uninstalling.....	11

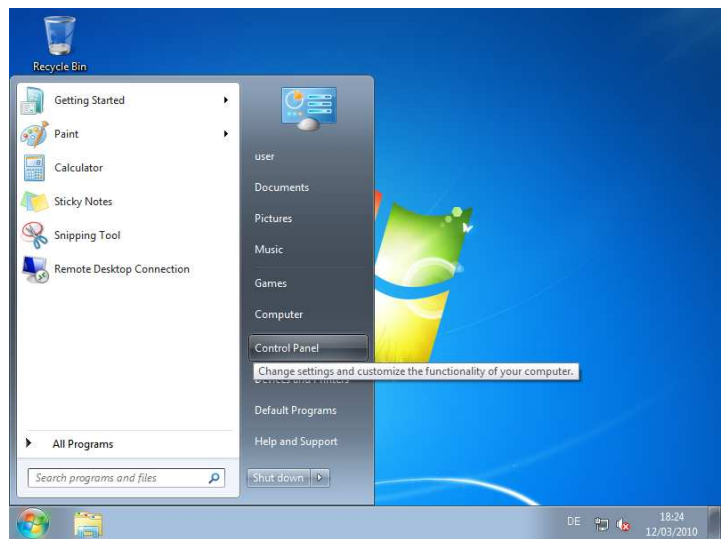
1. R60 and D6 USB driver installation Windows 7

The purpose of this installation guide is to provide a simple procedure for installing the R60 and D6 USB drivers under Windows 7. The following procedure describes the R60 USB driver installation as an example.

1.1. Windows 7 driver installation

To install the USB drivers under Windows 7, follow the instructions below:

1. Connect the device to a free USB port on your PC.
2. Click the Windows start button to display the start menu and select 'Control Panel'.



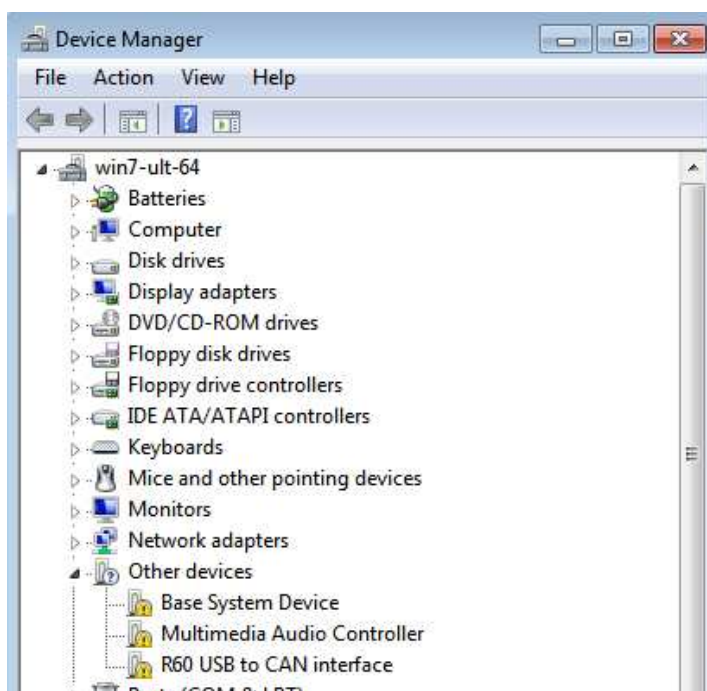
3. From the Control Panel window, select 'Hardware and Sound'.



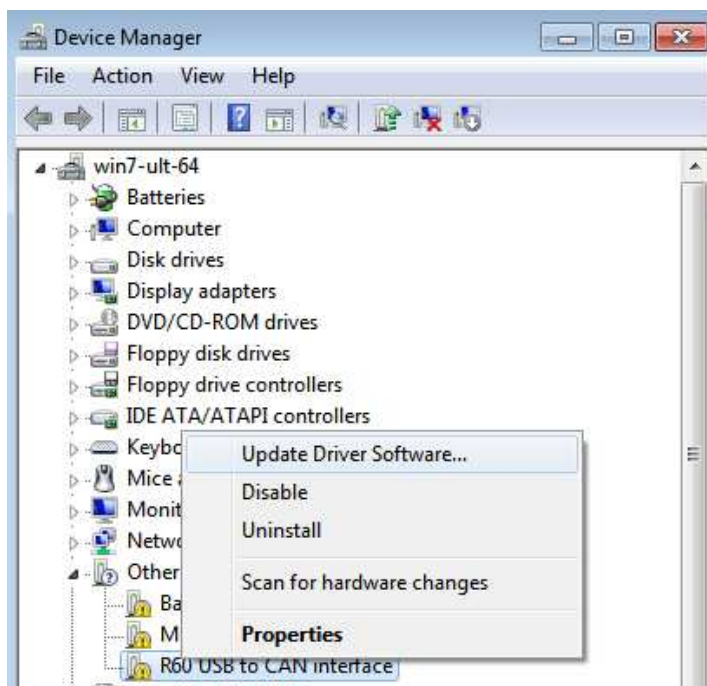
4. In the next screen, select 'Device Manager'.



In the Device Manager, a yellow warning symbol in front of each item under 'Other devices' indicates a problem, i.e. no driver installed.

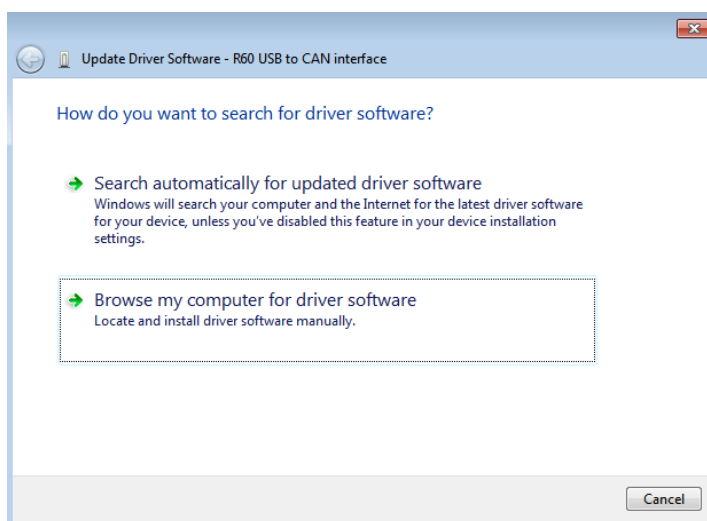


5. Right-click the R60 entry and select 'Update Driver Software...' from the context menu.

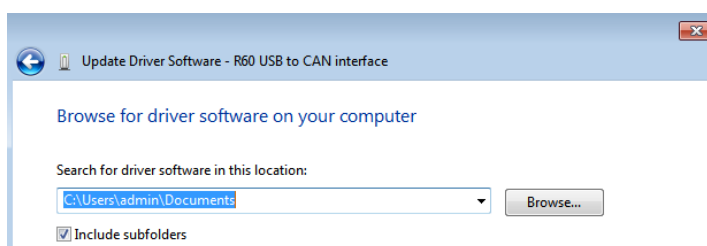


The automatic or manual search options will be displayed.

6. Select the second option to browse manually.

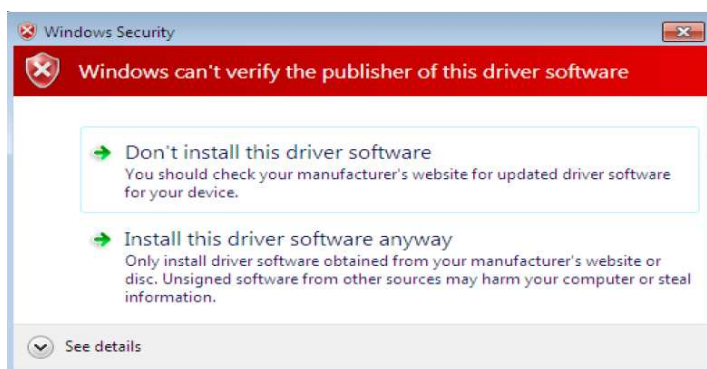


7. Then click the 'Browse' button next to the address bar to select the location where you saved the drivers.



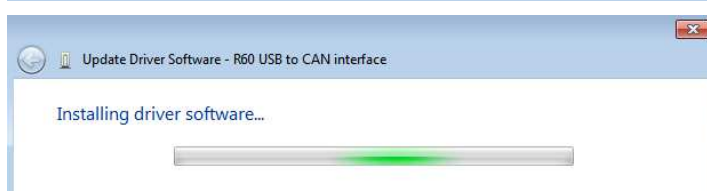
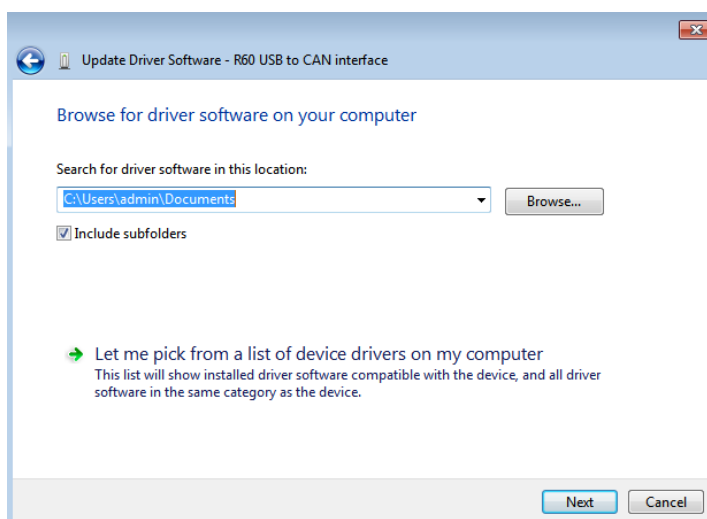
This may be on a CD or in a folder on the PC. It is not necessarily the same location as shown in the screenshot. The drivers could have been saved elsewhere in a location of your choice.

A pop-up window indicating that the driver is not certified will be displayed.

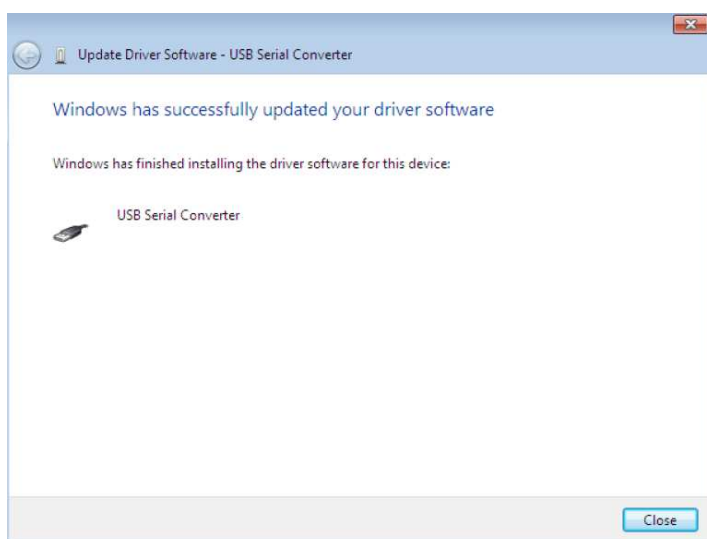


You can ignore this warning and continue the installation by selecting 'Install this driver software anyway'.

8. After entering the address, select 'Next' to start the installation procedure.

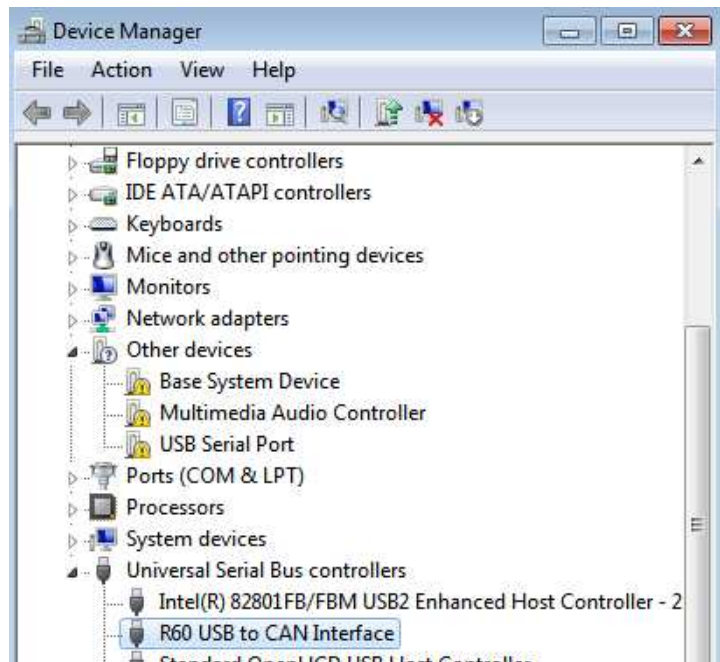


When the installation is finished, a completion screen will be displayed.

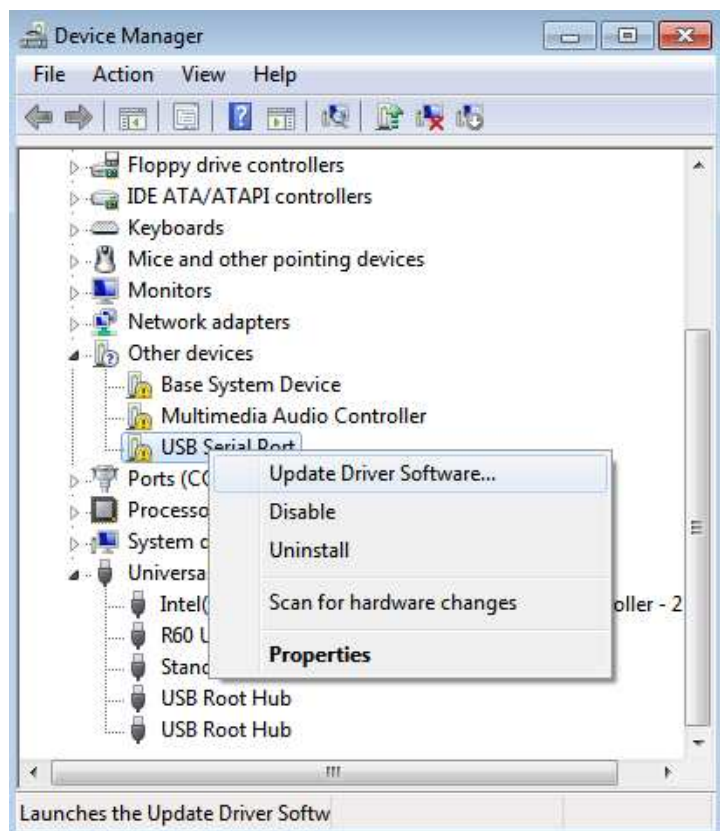


Click 'Close' to close this window and return to the Device Manager window.

The Device Manager will still show a device under 'Other Devices' but in addition there will be a new entry under 'Universal Serial Bus Controllers' (in the screenshot below displayed as 'R60 USB to CAN Interface'). This indicates that the bus layer of the driver has been installed.



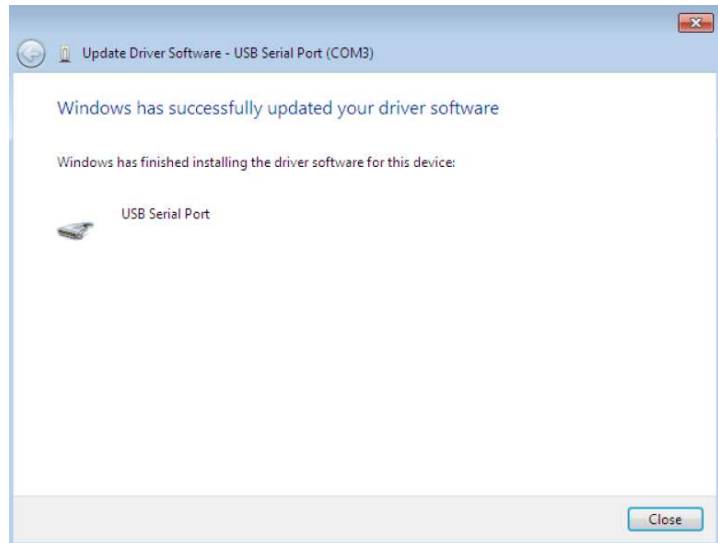
9. Right-click the 'USB Serial Port' entry and select 'Update Driver Software...' from the context menu.



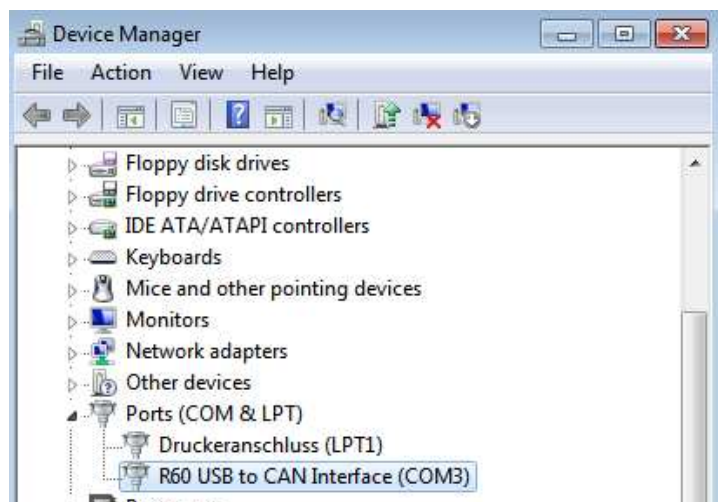
The procedure is exactly the same as for the hardware driver setup.

When the installation is finished, a completion screen will be displayed.

Note: This screen also displays the COM port assigned to the device.



Click 'Close' to close this window and return to the Device Manager window.



This time the Device Manager does not show an R60 entry under 'Other Devices' but displays entries under 'Universal Serial Bus Controllers' and 'Ports (COM & LPT)'. The above screenshot shows a correct installation. The device is now ready to use on COM3.

Note: Not all devices are installed to COM3. The COM port allocation is determined by the installation wizard on the basis of the next free COM port.

2. Uninstalling the drivers

To remove the drivers, open the Device Manager and simply right-click on the respective device entry and select 'Uninstall'. This will delete the respective entry only. Windows 7 provides an automatic method to delete driver files via a check box to 'Delete the driver software for this device' on the uninstall dialog box.

The uninstall procedure must be performed twice. Once for the device under 'Ports (COM & LPT)' and once for the device under 'Universal Serial Bus Controllers'.



Notes about the new uninstallation method:

- If the VCP driver has been installed, the COM port driver should be uninstalled before the bus driver. If the bus is removed first, the COM port will no longer appear in the Device Manager.
- If the files are deleted while other installed devices still require them those devices will not work correctly. This can be fixed by right-clicking the device and selecting 'Reinstall Driver' which will replace the missing files.
- If a device to be uninstalled is not connected to the PC, the device can still be removed by setting the device manager to show phantom devices. Please refer to the following section 3.1 Devices not shown in Device Manager for uninstalling.

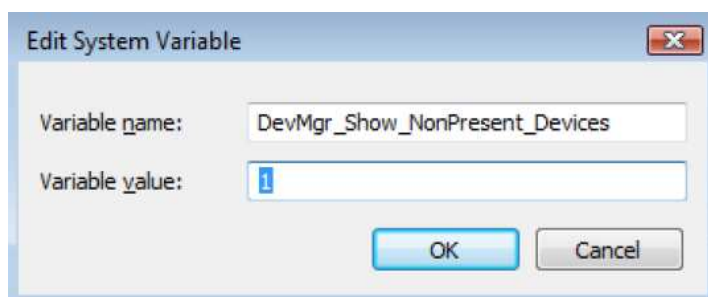
3. Troubleshooting

3.1. Devices not shown in Device Manager for uninstalling

Devices that have been installed on a system but are not currently available are referred to as "phantom devices". These devices are not usually displayed in the Device Manager, but can be made to be displayed as though they are attached. This allows device properties to be changed or devices to be uninstalled via Device Manager even though the device is not physically connected to the PC.

To display phantom devices in Device Manager, a new system variable is required.

1. Open 'Control Panel > System' then select the 'Advanced' tab and click 'Environment Variables'.
2. In the System Variables section (**NOT THE USER VARIABLES SECTION**), click 'New...' to display the following window:



3. Create a new System Variable called: 'DevMgr_Show_NonPresent_Devices' and set the **value** to **1**, then click OK.
4. Open the Device Manager ('Control Panel ⇒ System'), then select the 'Hardware' tab and click 'Device Manager...', or 'Control Panel ⇒ Device Manager' in Windows 7 and select 'View ⇒ Show Hidden Devices'.

The Device Manager will then show all hidden and phantom devices available on that PC as shaded.

