

NoizLetter.

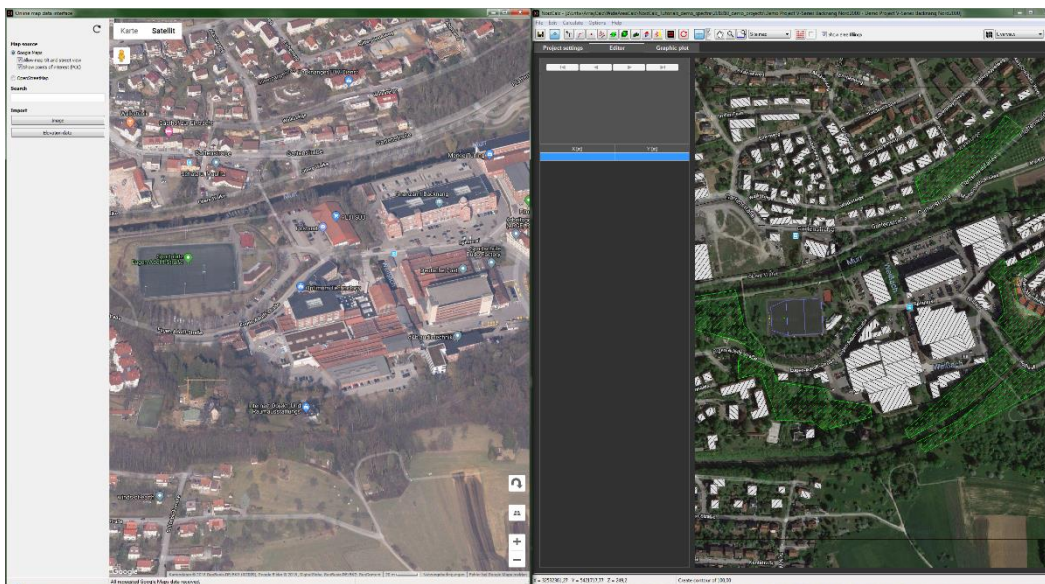
October 2018

NoizCalc 2.2

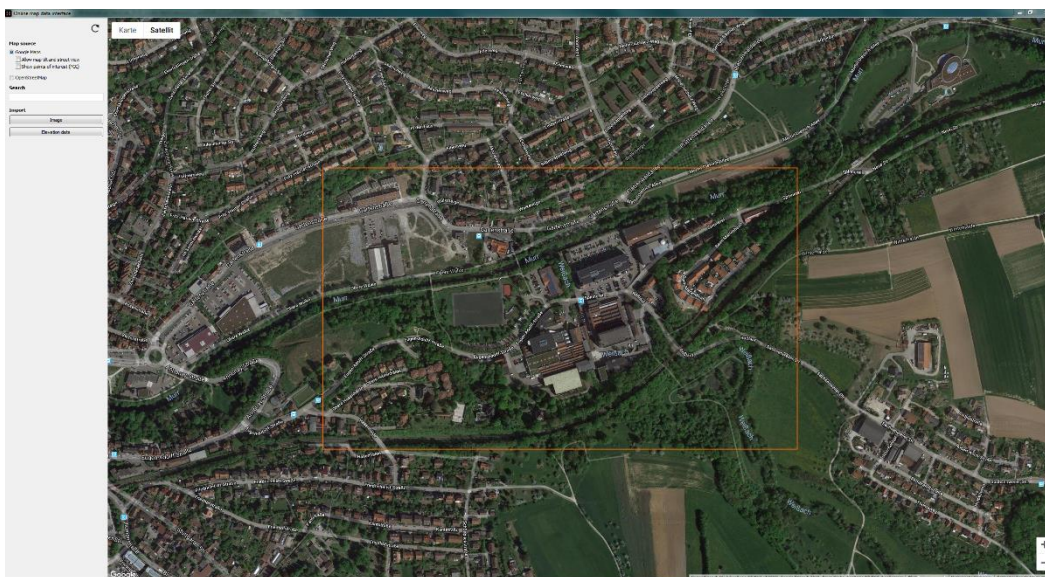
The map data interface received new features: Google tilt view, street view and points of interests.

NoizCalc 2.2 supports the latest ArrayCalc projects (V10.4) and is available at www.dbaudio.com.

The well-known Google street view and map tilt are now available directly in the map data window. Both are very useful when assessing building heights while working on a model. The map will automatically tilt when zooming in (provided that this service is available at the desired location). For an effective workflow, the windows can be placed side by side or even better, on separate screens. In addition, points of interests can be activated.



An orange frame in the map data window now indicates the overview area of the initial import as a reference (bitmap + elevation data).



NoizLetter.

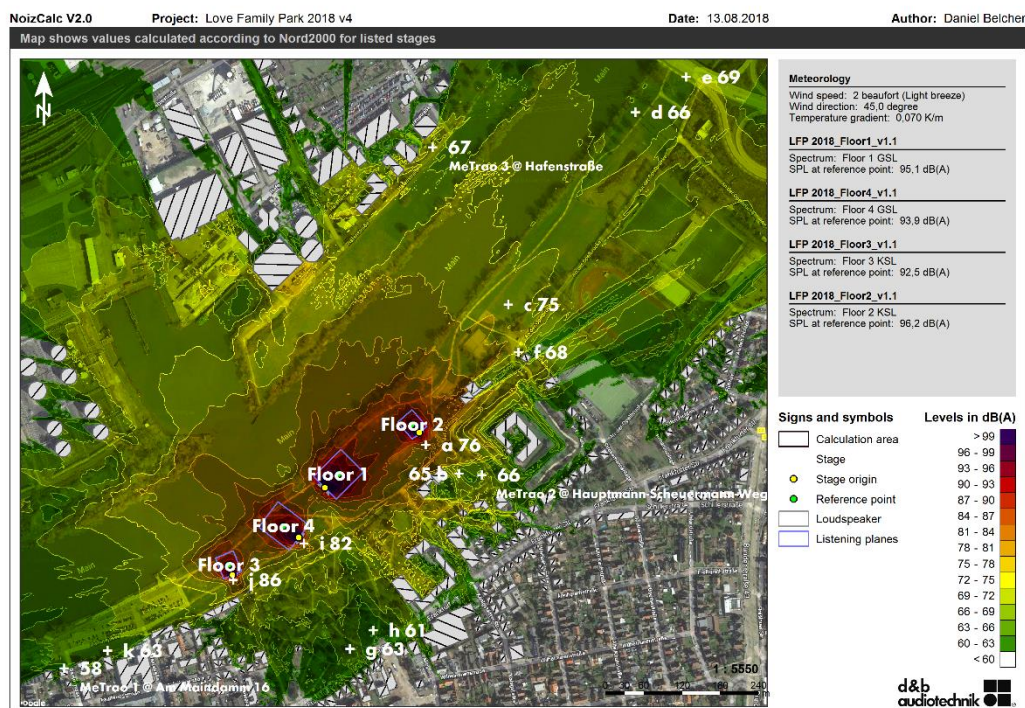
October 2018

New project format

The constant improvements and adaptations of NoizCalc to the dbpr format made it necessary to change the project format itself. Old NoizCalc projects are automatically converted to the new format when opened the first time with NoizCalc 2.2.

Love Family Park

The Love Family Park is a techno festival which took place on July 28th in Rüsselsheim (Germany) this year. Since the location on the Main is directly in the urban area, noise immissions were a special concern right from the start. In order to address this concern, all four floors were equipped with the d&b SL-Series - to ensure more art in the audience areas and less noise in the surrounding neighborhood. NoizCalc was used during the planning phase to assess any potential noise challenges and the event was accompanied by acoustic measurements. The correlation between the predicted levels and the measured levels is good. In terms of noise (and other aspects), the event was not a nuisance to the neighborhood and may very well take place again at the same location next year.



NoizCalc 2.2 is available for download at www.dbaudio.com, alongside the d&b ArrayCalc simulation software and the R1 Remote control software. NoizCalc 2.2 can be installed parallel to previous versions.

For any questions or queries, please contact support@dbaudio.com