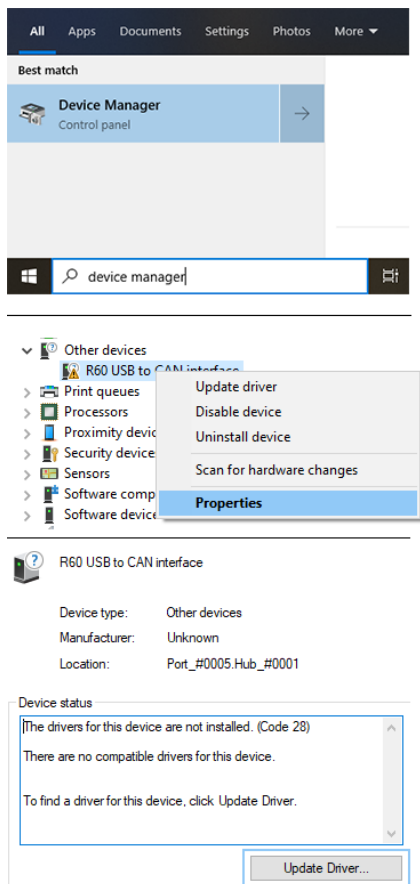


# d&b R60/D6 driver installation - Windows 10



The driver for the R60/D6 is available from the Microsoft driver distribution center and is automatically installed after the device is connected to the computer (you need an active internet connection). If you need to install the driver manually, proceed as follows:

1. Download the R60/D6 driver at [www.dbaudio.com](http://www.dbaudio.com).
2. Connect the device to a USB port on your PC.
3. Click on the Windows 10 search box at the bottom left of your display and type «Device Manager».
4. Open the «Device manager».
  - ↳ In the device Manager, a yellow warning symbol in front of each item under «Other devices» indicates an issue, e.g. no driver installed.
5. Right-click the corresponding entry (R60 or D6) and click «Properties».
6. Click «Update driver».
7. Click «Browse my computer for driver software».
8. Click «Browse» and select the folder including the R60/D6 driver.
9. Click «Next».
  - ↳ Windows search for the driver in the corresponding folder and install it. After the installation you see a confirmation window for the successful update. The device manager still shows a device under «Other Devices», but in addition there will be a new entry under «Universal Serial Bus Controllers». This indicates that the USB layer of the driver has been installed. To install the missing driver for the «USB serial port», proceed as follows:
10. Right click the entry «USB serial port» and click «Properties».
11. Repeat steps 6 - 9 from this installation guide to install the driver.

## Signed or unsigned driver?

If you have previously installed the R60/D6 driver and this was before d&b has provided a signed driver then it was necessary to disable the «Driver signature enforcement» on Windows. With the signed driver this is no longer necessary.

To check which driver is installed on your system (signed or unsigned), proceed as follows:

1. Enter the following path:  
**C:\Windows\System32\drivers**
2. Right-click the file «ftdibus.sys».
3. Click «Properties».
4. Enter the tab «Digital Signatures».
  - ↳ If you see an entry with the signature creator «d&b audiotechnik» in the list, the signed driver is installed.